

Introduction

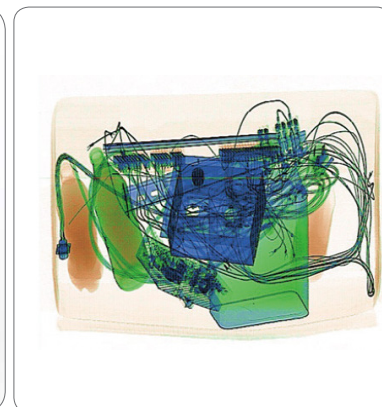
LynX DV 100100 X-ray Luggage Scanner is adopted with new technology featured by computer control and image process as the core. With higher resolution, clearer image, it is easier to identify contraband. Through setting on software, different metal objects inside inspected luggage will trigger sound/light alarm, meanwhile highlighted on software interface. The tunnel is proper in size, occupying a small area, suitable for luggage inspection at airport, customs, railway station, nuclear power plant, government building, post center, embassy, meeting center, warehouse and etc.

Feature

- ※ Handsome outlook, more hi-tech features
- ※ Body color open to customs request in accordance with environment
- ※ Lead protection specially included
- ※ Automatic identification of metal objects, auto alarm, easier operation
- ※ Highly mobile, equipped with gliding gear, making movement more convenient
- ※ Suitable for luggage inspection in various environments
- ※ Guiding display included, making inspection more friendly



Operation Desk



Scanned Image



X-ray Luggage Scanner

Basic Parameter

Model	Tunnel Size (mm)	Weigh (kg)	Sizes (mm)	Temperature (°C)/ Humidity	Power Consumption (W)	Power Source
DV100100	W1000×H1000	1800	L4250×W1720×H1870	-5~40 / 10%~95%	1300	220VAC,50±3Hz

Technical Parameter

Technical Overview	
Size	L4250×W1720×H1870 (mm)
Tunnel Size	W1000×H1000 (mm)
Radiation Protection	less than 0.1μGy /h outside protection boundary (5cm away from shell)
Conveyor Speed	0.2m/s
Max load on Conveyor	200Kg
Wire Pair Resolution	40AWG (0.0787mm single copper wire) >44 SWG
Spatial Resolution	<1.0mm wire pair, superior to 1.3mm of industry standard
Penetrable Resolution	34AWG (0.160mm)
Penetrability	40mm steel plate
Dosage per Inspection	≤ 2.3μSv/h
Beam Direction	Top + Sideway
Scanning Angle	80°
X-ray Detector	L-shape array photodiode detector
Cotinuuous Scanning Function	Continous X-ray scanning against super thin objects
Working Environment	-20 °C ~+60 °C /20%~95% (Non-Condensing)
Noise	≤60dB
Display	DELL 24" Display x 2
One-Key for turning on/off	In emergency, press emergency button to immediately shut off x-ray emitter and conveyor
Image Process System	
Image Enhance	Contrast of highlighted area enhanced by high/lower penetration, making easy penetrated area clearer on image
Image Display	Continous Zoom-in, Image Rotation, Image Insert, Recognition Training and etc.
Image Playback	50 checked images playback
Image Index	Image index on scanning time, operator ID, image saving mode and etc.
Storage Capacity	Automatic saving of scanned objects, storage no less than 100,000 images
Treatment Software	Poly-energy colored image, different material in different color, making contraband easier to indentify
Radiation Safety	
Radiation Leakage	Less than 0.1μGy /h, in compliance with all domestic and international health and radiation safety standards
Film Safety	In accordance with ASA/ISO1600 film safe standard
System Basic Functions	
Date Display, Operation Management, System Timing, X-ray Beam Timing, Automatic Power-on Calibration, Image backup/index, Maintenance &Test, and etc.	

Our Contact: